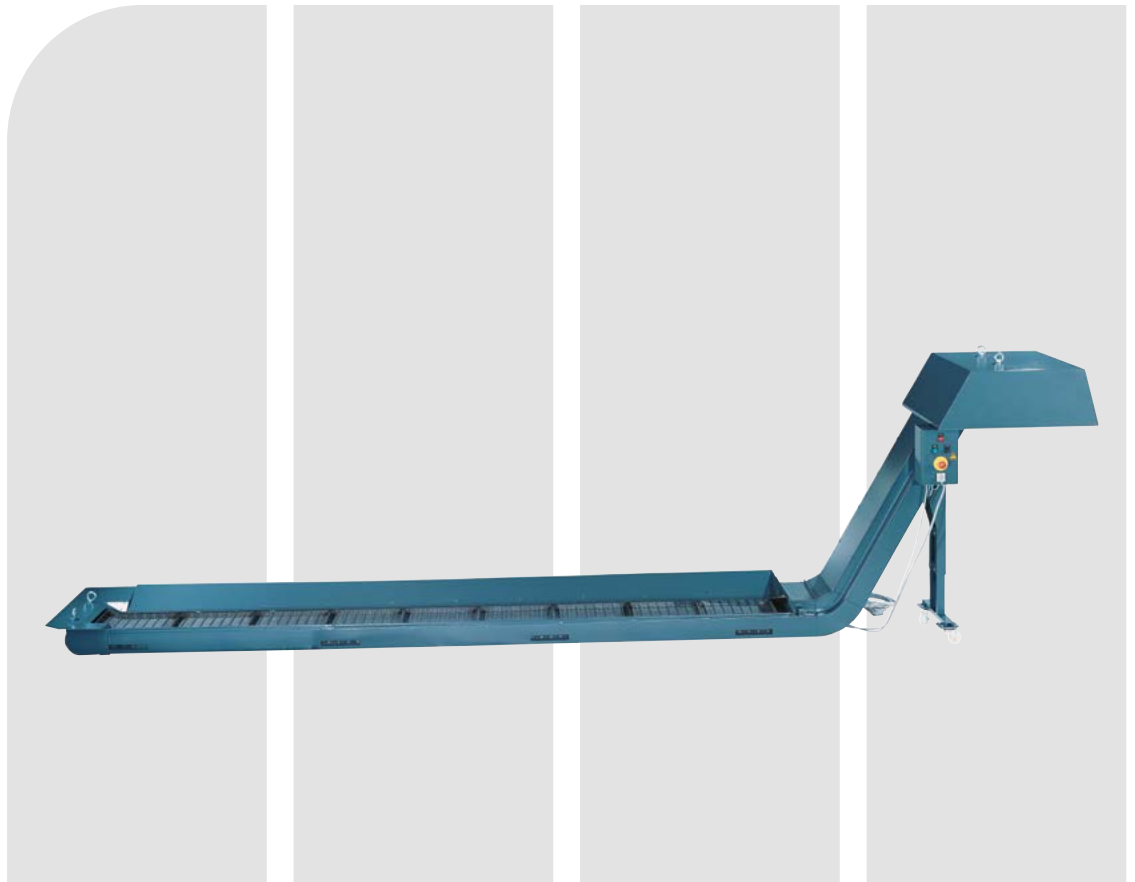


CT 20 CHIP CONVEYOR



Efficient conveyor for medium-heavy types of chips as well as alloyed steels

Universal use – Reliable design

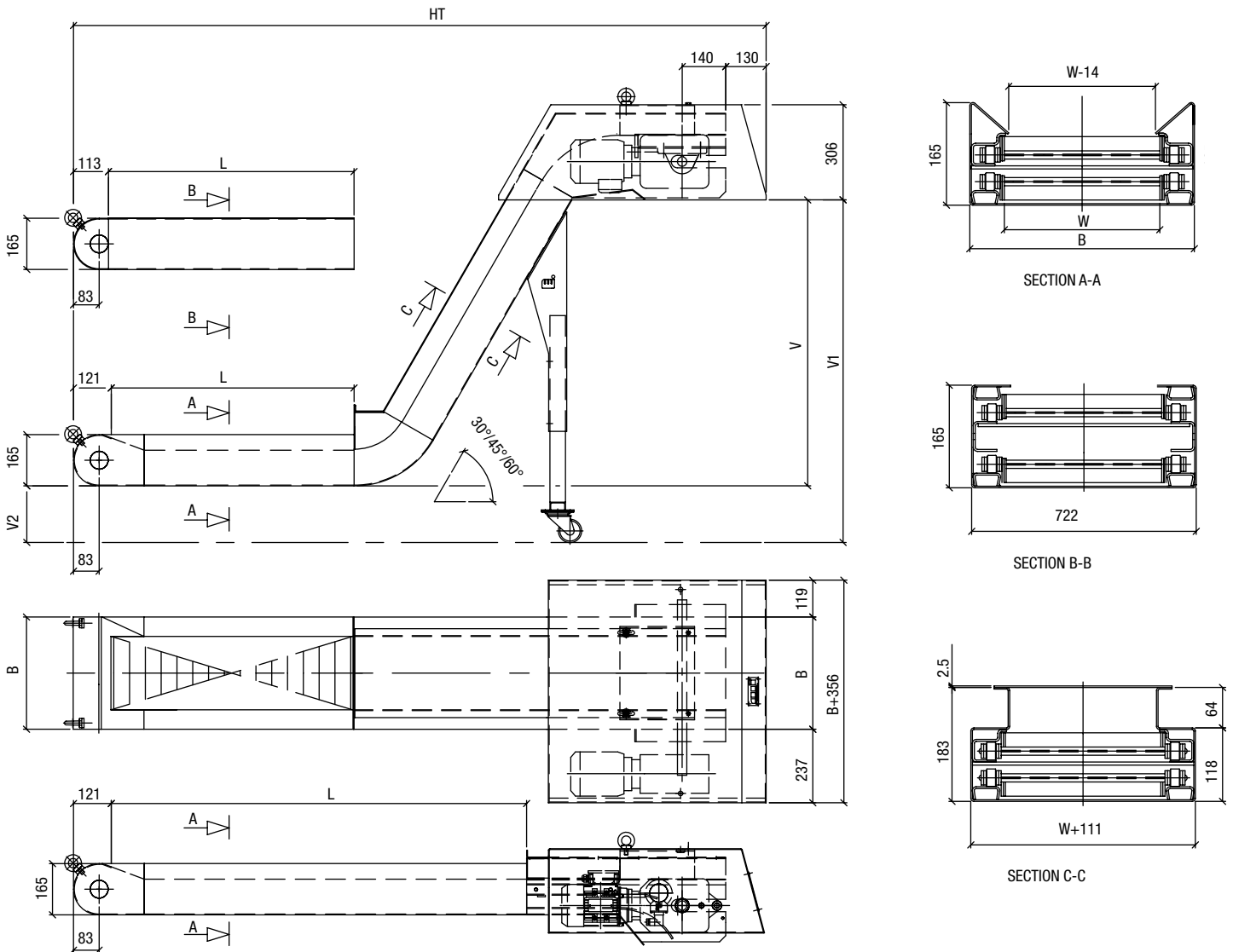
FIELDS OF APPLICATION

- Turning machines and processing centres
- Boring machines
- Customised machines with drive power up to 30 kW
- Medium-heavy chip removal
- Suitable for medium-heavy chips and alloyed steels

BENEFITS

- Reliable design
- Chain pitch 50.8 mm (2 inch)
- Low operating costs
- Proven roller block design to ensure a long lifetime for the chain
- Resistant overload protection for the drive unit to increase the lifetime of the motor
- Can be easily fitted to the tool machine

CT 20 CHIP CONVEYOR



Space requirements and footprint

TECHNICAL DATA / STANDARD MEASUREMENTS

Chain pitch	50.8 mm / 2"	Belt thickness	3 mm
Chain roller diameter	28.6 mm	Belt drawing force	9600 N
Chain roller width	20 mm	Breaking load	70 000 N
Belt thickness	2.5 mm	Speed (in m/min)	1.6 - 3.2 - 4.5
Belt width (W) min	150 mm	Max central length (guide value)	10 000 mm
Belt width (W) max	1 000 mm	Applications for machines up to	30 KW
Cleat height	28 mm	max drive power (guide value)	
Cleat distance	8 partitions		

Subject to change. As of March 2011.